

JADM2ISLB

Dimension: 22.00 x 30.00 mm

Chipset: Intel i210IT GbE LAN controller

Feature:

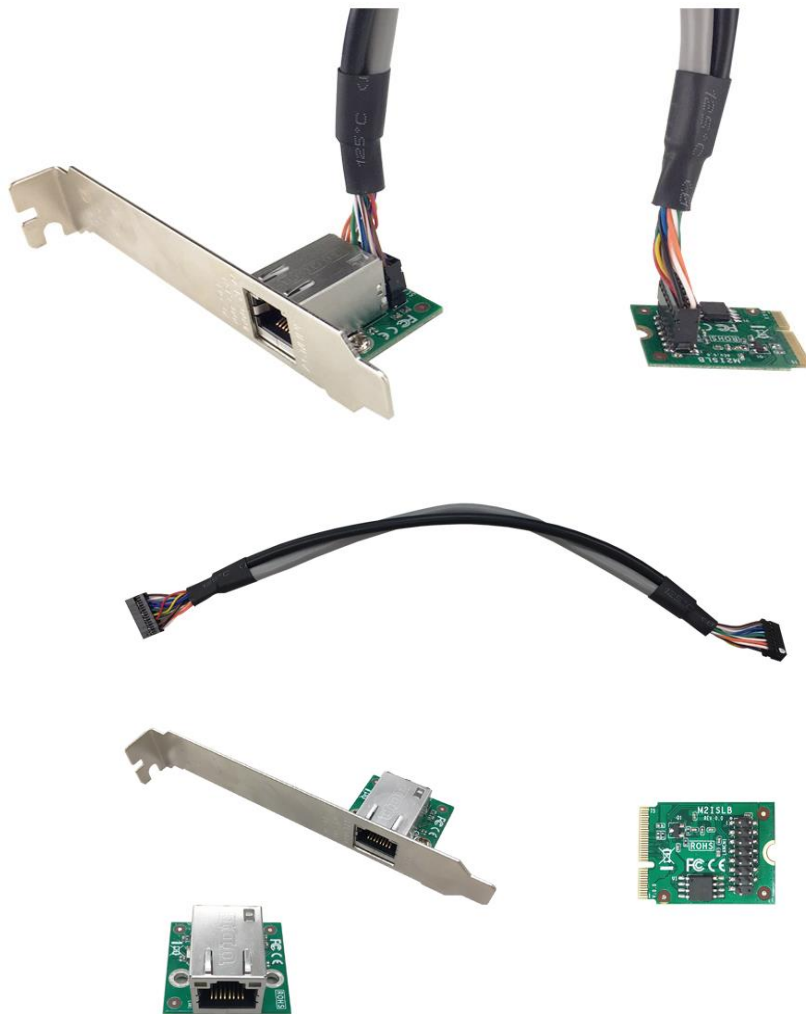
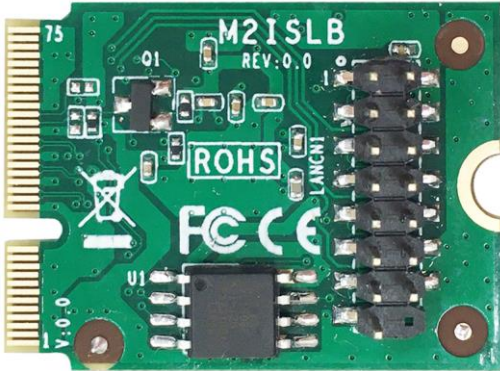
1. Compliant with the 1Gb/s IEEE802.3,802.3u,802.3ab specifications
2. Support Full duplex operation at 10/100/1000 Mb/s
3. Support Half duplex at 10/100 Mb/s
4. Wake on LAN function (Depend on M/B 3.3V Standby Power)
5. Support 1 * GbE

Interface

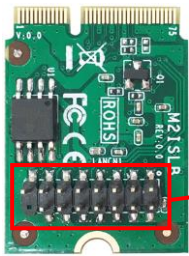
M.2 E-key 2230

Standard Accessories:

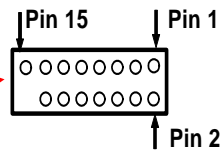
1. 25cm 16P to 16P cable * 1 pcs
2. GbE Bracket (J2ADSLANCNCR10-01G) * 1 set



JADM2ISLB pin header:



LANCN1



Pin Number	Pin Define	Pin Number	Pin Define
Pin1	DD+	Pin2	3.3v power
Pin3	DD-	Pin4	3.3v power
Pin5	DC+	Pin6	LAN2_1000-
Pin7	DC-	Pin8	LAN2_LINK_ACT-
Pin9	DB+	Pin10	LAN2_100-
Pin11	DB-	Pin12	GND
Pin13	DA+	Pin14	GND
Pin15	DA-		

JADSLANCN1-01G pin header:

Pin Number	Pin Define	Pin Number	Pin Define
Pin1	DD+	Pin2	3.3v power
Pin3	DD-	Pin4	3.3v power
Pin5	DC+	Pin6	LAN2_1000-
Pin7	DC-	Pin8	LAN2_LINK_ACT-
Pin9	DB+	Pin10	LAN2_100-
Pin11	DB-	Pin12	GND
Pin13	DA+	Pin14	GND
Pin15	DA-		

Jetway M/B support List:

Model	Result
MT95	PASS
NF797	PASS
NF796M	PASS
NF893	PASS
NF892	PASS
MI97	PASS
MI98	PASS
MZ9300	PASS
NC9AMXM	PASS
NF835	PASS
MF05	PASS
AF791/AF791E	PASS