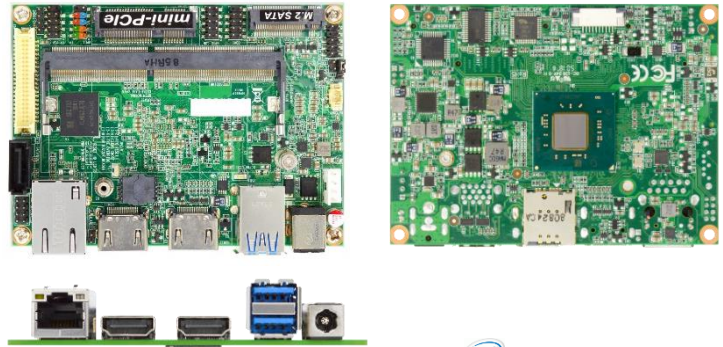


JNP891P-4125 Series

PICO-ITX size Embedded Motherboard with Intel® Gemini Lake-R Processor, DDR4 up to 8GB, support triple display

1. Intel® Gemini Lake-R SoC Processor
2. 1* DDR4 2400MHz SO-DIMM up to 8GB
3. Support 2* HDMI, 1* eDP
4. 1* COM, 2* USB3.0, 2* USB2.0
5. 1* Mini-PCIe, 1* M.2 (M-key, 2242)
6. Support 1* SATA III (6Gb/s), onboard 32GB eMMC (JNP891G32-4125)
7. 12V DC-in



Overview

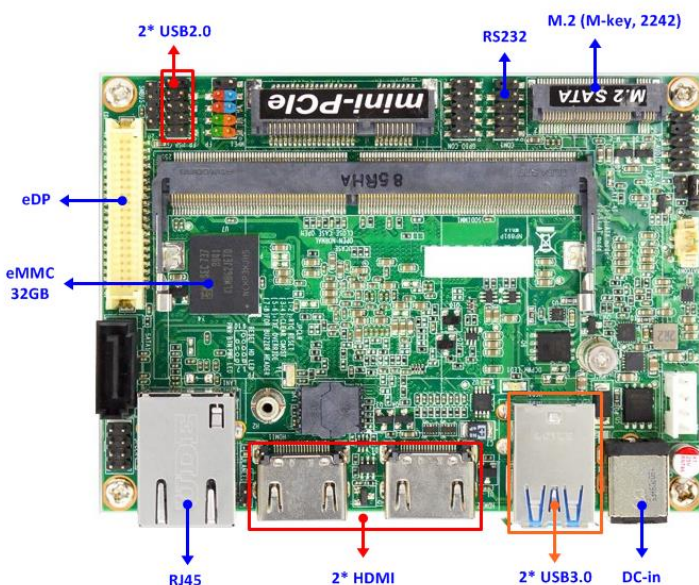
The JETWAY JNP891P Series adopts the Intel® Gemini Lake-R SoC processor. JNP891P Series equipped with DDR4 SO-DIMM slot and M.2 (M-key, 2242) which is suitable for most of the Digital Signage and KIOSK applications.

In addition, it offers flexible expansion with Mini-PCIe slot which can connect other add-on modules. JNP891P Series also has two USB 3.0, two USB 2.0, one RS232 port. Customers can connect different peripherals to meet their needs. JNP891P Series also support two HDMI and eDP triple display which can be used for Digital Signage and KIOSK needs. All of the JNP891P Series designs provide rich features with small dimension.

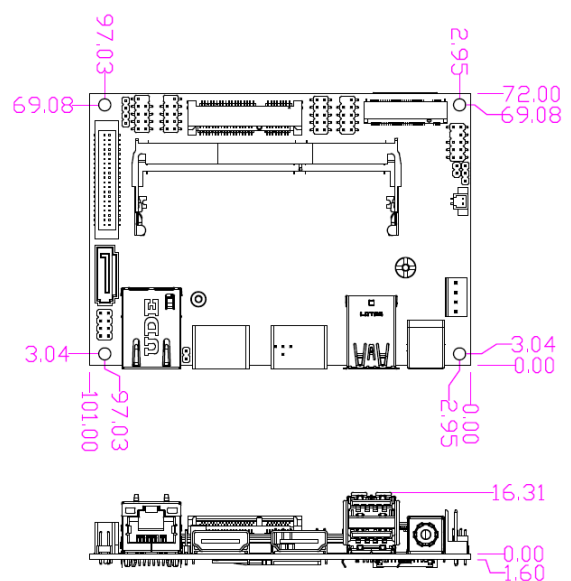
Application

Digital Signage / KIOSK / Intelligent Home / IOT Solution

I/O Diagram



Mechanical Drawings (Unit = mm)



Specifications

| | |
|---|--|
| Model <ul style="list-style-type: none">JNP891P-4125JNP891P32-4125 (W/32GB eMMC) | Form Factor <p>2.5" (100 * 72mm)</p> |
| Processor System <ul style="list-style-type: none">Intel® Gemini Lake-R J4125 SoC ProcessorAMI Flash ROM BIOS | Expansion Slot <p>1* Mini PCIe (full size)</p> |
| Memory <p>1* SO-DIMM DDR4 2400MHz SDRAM up to 8GB</p> | Graphics <ul style="list-style-type: none">Intel® HD Graphics, shared memory1* eDP (Max Resolution: 4096x2304@60Hz)2* HDMI 2.0 (Max Resolution: 4096x2160@60Hz)Support Triple Displays |
| Ethernet <p>1* Realtek RTL8111H GbE</p> | Audio <p>HD audio: Realtek ALC888S</p> |
| Storage <ul style="list-style-type: none">1* SATAIII (6 Gb/s)1* M.2 M-key (2242 W/ SATA interface)32GB eMMC on board (JNP891P32-4125) | Rear I/O <ul style="list-style-type: none">2* USB3.02* HDMI1* RJ4512V DC-in |
| Internal I/O <ul style="list-style-type: none">2* USB2.01* eDP1* COM (RS232)1* SATAIII1* Mini-PCIe (full size)1* SIM card slot1 * 32GB eMMC (JNP891P32-4125) (If use Win 10 OS, we recommend the eMMC is use for OS boot up purpose.)1* GPIO (8 bit)1* Chassis intrusion1* Audio Header1* SMBUS1* AT mode | Watchdog Timer <ul style="list-style-type: none">From Super I/O to drag RESETCON#256 segments (10sec ~ 255min) |
| Power <p>12V DC-in</p> <ul style="list-style-type: none">- AT: Directly PWR on as Power input ready- ATX: Press Button to PWR on after Power input ready | Compliance <p>CE, FCC, LVD, RoHS, REACH</p> |
| Temperature <ul style="list-style-type: none">Operating: 0°C ~ 60°CStorage: -20°C ~ 85°C | Warranty <p>2 Years Limited Warranty</p> |

* Specifications subject to change without notice, not responsible for typographical errors. Does not include HDD or OS.

Standard Accessories

| Parts Number | Description | Parts Number | Description |
|--------------|--------------------|--------------|-------------|
| ----- | JNP891P Series M/B | | |