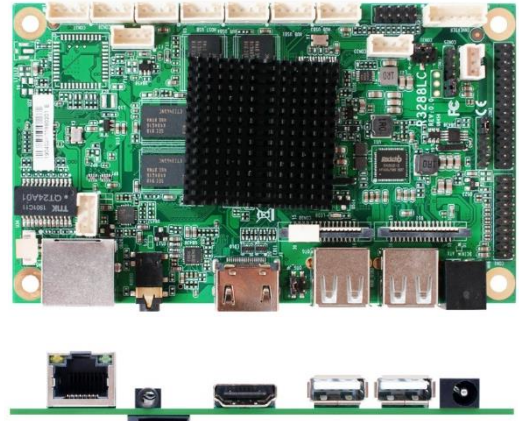


JR3288LC-2NA

Rock Chip® ARM Cortex A17 RK3288, 12V DC-in

1. Rock Chip® ARM Cortex A17 RK3288 Quad-core 1.8GHz
2. On board 1333/2GB DDR3L DRAM
3. On board 8G Flash ROM up to 64GB
4. 1* Realtek GbE, 1* RS232, 2* UART, 1* Debug, 6* USB2.0, 1* OTG (Co-lay USB2.0)
5. 1* HDMI, 1* eDP, 1* 24-bits Dual CH LVDS, 1* MIPI DSI, 1* MIPI CSI
6. 1* Micro SD up to 64GB
7. Support 802.11 b/g/n 2.4G, BT-V4.1
8. Support Android 9.0 and Debian9.0

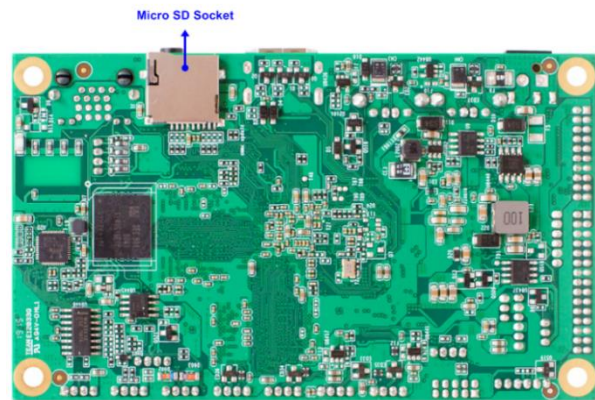
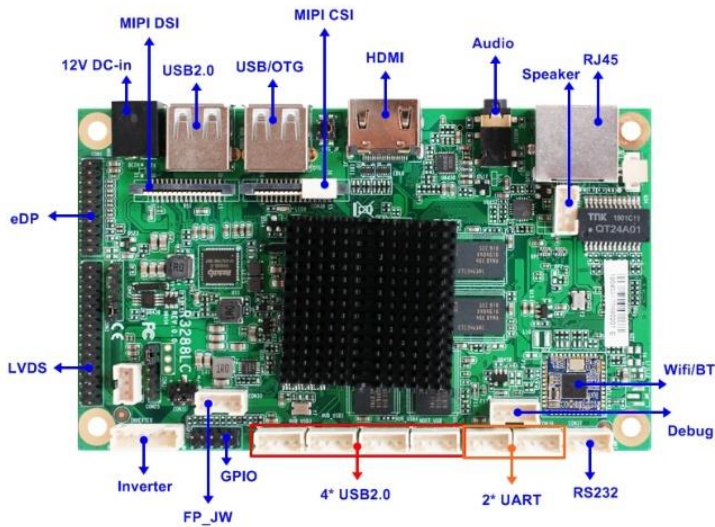


Application

- Digital Signage
- KIOSK
- POS



I/O Diagram



Specifications

Model

JR3288LC-2NA

Processor System

- Rock Chip® ARM Cortex A17 RK3288
- Quad-core 1.8GHz
- Rock Chip® RK808-B PMU

Memory

Onboard DDR3L 1333MHz 2GB

Ethernet

1* Realtek RTL8211E-VB GbE

1* Realtek RTL8723BS 802.11b/g/n 2.4G WIFI and BT-V4.1

Storage

8GB Flash ROM (Max 64GB)

Internal connector

- 4* USB2.0
- 3* UART (CON36/39: TTL , CON47: for Debug, CON36 Co-lay RS232/485)
- 1* RS232 (CON37)
- 1* LVDS / Inverter
- 1* eDP
- 1* MIPI DSI
- 1* MIPI CSI
- 1* Speaker (3W AMP)
- 1* GPIO (4 bit)
- 1* I2C

Power

12V DC-in (PWR Con)

- AT : Directly PWR on as Power input ready

- ATX: Press Button to PWR on after Power input ready

Temperature

- Operating: -10°C ~ 60°C
- Storage: -20°C ~ 70°C

Form Factor

120 * 72mm

Expansion Slot

1* Micro SD

Graphics

- Mali T764 GPU,shared memory
- 1* HDMI (Max Resolution: 1920x1080@60Hz)
- 1* LVDS (Max Resolution: 1920x1200@60Hz)
- 1* eDP (Max Resolution: 2560x1600@60Hz)
- 1* MIPI DSI (Max Resolution: 1920x1080@60Hz)
- Support Dual Displays

Audio

2 channel HD audio: ES8316

Rear I/O

- 1* DC Jack (12V)
- 2* USB2.0 (USB1 Co-lay OTG)
- 1* HDMI
- 1* AUDIO
- 1* Micro SD
- 1* Ethernet

Watchdog Timer

- From Super I/O to drag RESETCON#
- 256 segments (0 ~ 255 sec)

Compliance

CE, FCC, LVD, RoHS, REACH

Warranty

2 Years Limited Warranty

*Specifications subject to change without notice, not responsible for typographical errors. Does not include HDD or OS.

OS Support List

SKU	Android	Linux
RK3128	5.1	
RK3288	9.0	Debian 9.0
RK3328	7.1	
RK3399	7.1	Debian 9.0

Standard Accessories

Parts Number

Description

----- JR3288LC-2NA M/B

Parts Number

Description